

FOR LEASE

1302 2nd Street NE, Minneapolis



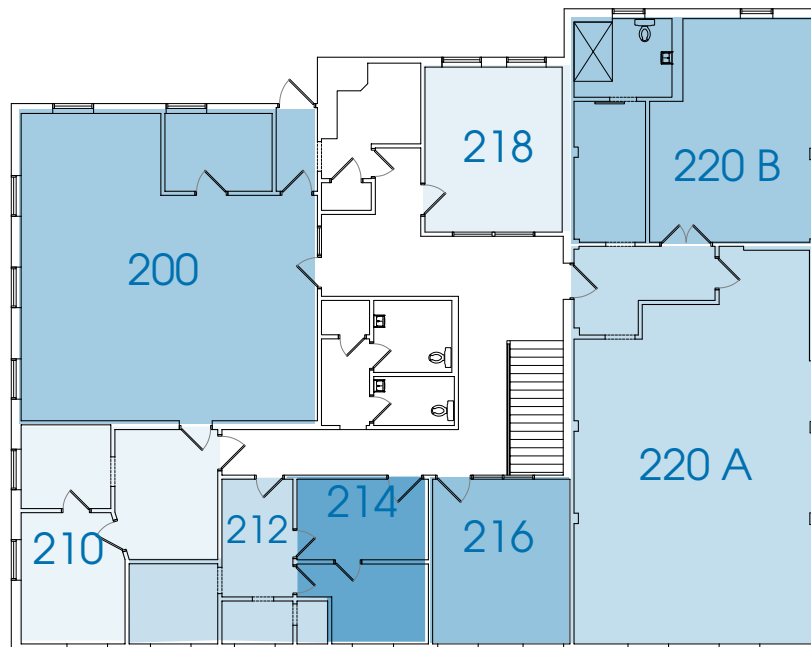
Contact:

Tony Kriha - 612.986.2511 - tony@landergroup.com

- Historic brick building is a former 1920's two-story commercial bank.
- Above Dangerous Man Brewery and adjacent to Young Joni.
- Off-street parking in rear lot available.
- Excellent Northeast Minneapolis location.
- Common kitchenette

Availability

Suite 200	Approx. 1,134 sq ft	
Suite 210	Approx. 585 sq ft	— LEASED
Suite 212	Approx. 303 sq ft	— LEASED
Suite 214	Approx. 261 sq ft	— LEASED
Suite 216	Approx. 292 sq ft	— LEASED
Suite 218	Approx. 284 sq ft	— LEASED
Suite 220A	Approx. 998 sq ft	— LEASED
Suite 220B	Approx. 650 sq ft	— LEASED



Presented by:

LANDERGROUP
urban placemaking

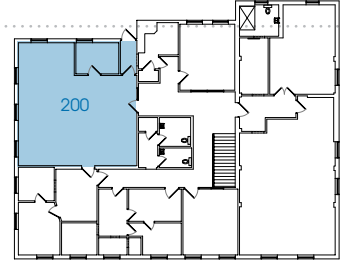
www.landergroup.com

2705 East 38th Street, Minneapolis, MN 55406

FOR LEASE

1302 2nd Street NE, Minneapolis

SUITE 200



Common hall leading to 200



Common kitchenette



Ste 200 looking NW



Common landing



Ste 200 looking east



Ste 200 looking SW

